

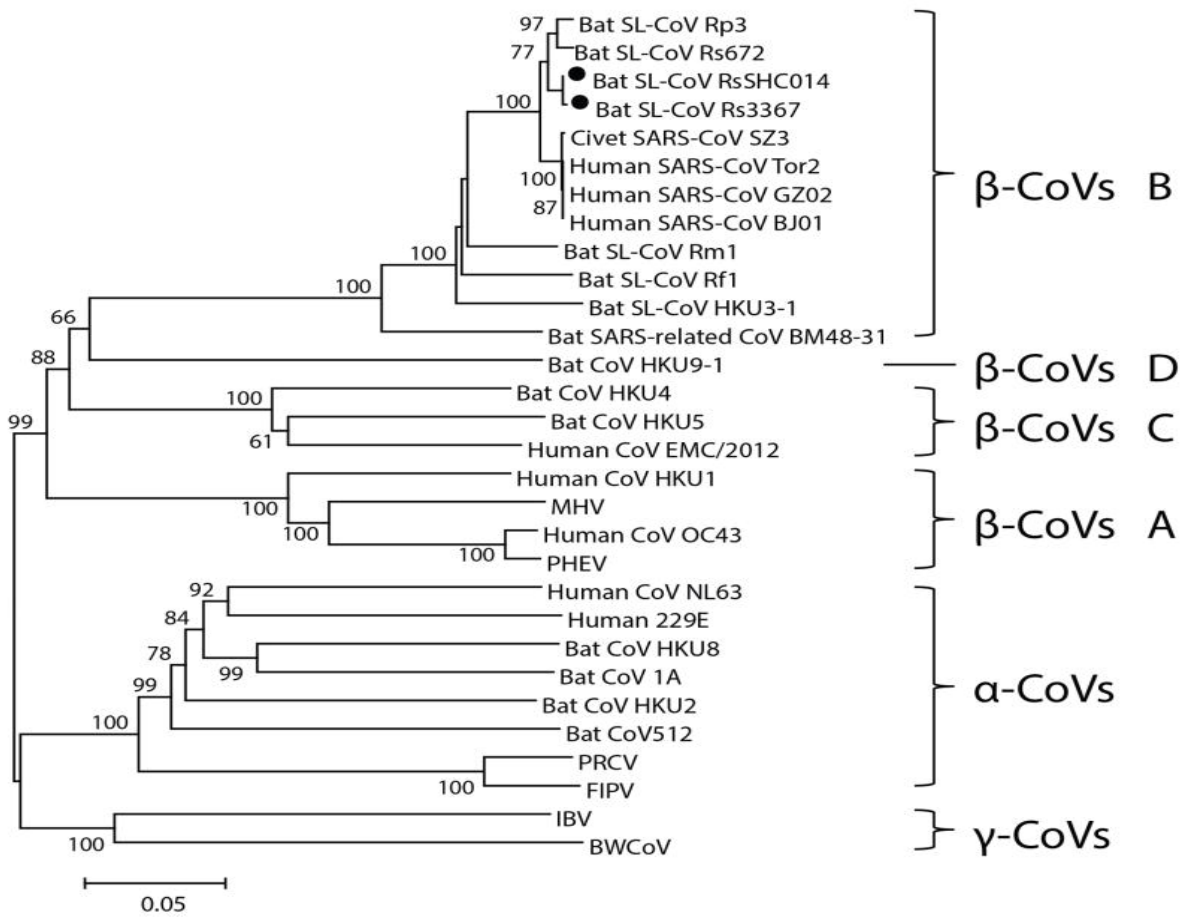
Human Coronavirus Related Products

Recent emergence of a novel human coronavirus (**2019-nCoV**) in Wuhan, China has attracted many attentions from scientific community to general public. The 2002–3 pandemic of severe acute respiratory syndrome (SARS)[1] and the recent emergence of the Middle East respiratory syndrome coronavirus (MERS-CoV)[2] demonstrate that coronaviruses (CoVs) are a significant public health threat. Providing quality anti-viral products to the research community is one of the major goals of **Cambridge Biologics, LLC (Cambridge Bio)**. We will put in the best effort to meet the needs of the scientists in searching for recombinant proteins and monoclonal and polyclonal antibodies for studying **2019-nCoV**. The only publicly available information on **2019-nCoV** is that it is a novel human coronavirus, not related to SARS-CoV and MERS-CoV. There are enough evidences suggesting that both SARS-CoV and MERS-CoV most likely transmitted from bats [3,4,5]. Whether **2019-nCoV** is also originated from bat has yet to be seen. **Cambridge Bio** has developed a panel of recombinant and monoclonal antibodies against human and bat coronaviruses as summarized below. We also provided the homolog between human and bat CoV viral proteins, and other information.

Coronavirus related products:

Genebank No.	Cat. No.	Product Name	Product Type	Source	Unit	Price	Application
AY278487	01-03-0001	S (ΔTM)(SARS-CoV) (Beijing 02)	Purified protein	HEK293	100 μg	\$399	WB standard, Ab ELISA, immunogen, etc.
AY278487	01-03-0002	S (1-1190)(SARS-CoV) (Beijing 02)	Purified protein	HEK293	100 μg	\$299	WB standard, Ab ELISA, immunogen, etc.
AY278487	01-03-0003	S (RBD)(SARS-CoV) (Beijing 02)	Purified protein	HEK294	100 μg	\$299	WB standard, Ab ELISA, immunogen, etc.
AY278487	01-03-0004	N (SARS-CoV) (Beijing 02)	Purified protein	E.coli	100 μg	\$299	WB standard, Ab ELISA, immunogen, etc.
AY278487	01-03-0005	M (SARS-CoV) (Beijing 02)	Purified protein	E.coli	100 μg	\$299	WB standard, Ab ELISA, immunogen, etc.
KM015348	01-03-0006	S (ΔTM)(MERS-CoV) (EMC 2C/2012)	Purified protein	HEK293	100 μg	\$399	WB standard, Ab ELISA, immunogen, etc.
KM015348	01-03-0007	S (1-1190)(MERS-CoV) (EMC 2C/2012)	Purified protein	HEK293	100 μg	\$299	WB standard, Ab ELISA, immunogen, etc.
KM015348	01-03-0008	S (RBD)(MERS-CoV) (EMC 2C/2012)	Purified protein	HEK294	100 μg	\$299	WB standard, Ab ELISA, immunogen, etc.
KM015348	01-03-0009	N (MERS-CoV) (EMC 2C/2012)	Purified protein	E.coli	100 μg	\$299	WB standard, Ab ELISA, immunogen, etc.
KM015348	01-03-0010	M (MERS-CoV) (EMC 2C/2012)	Purified protein	E.coli	100 μg	\$299	WB standard, Ab ELISA, immunogen, etc.
NC_002645	01-03-0011	S (ΔTM)(Human coronavirus 229E)	Purified protein	HEK293	100 μg	\$399	WB standard, Ab ELISA, immunogen, etc.
NC_002645	01-03-0012	S (1-1190)(Human coronavirus 229E)	Purified protein	HEK293	100 μg	\$299	WB standard, Ab ELISA, immunogen, etc.
NC_002645	01-03-0013	S (RBD)(Human coronavirus 229E)	Purified protein	HEK294	100 μg	\$299	WB standard, Ab ELISA, immunogen, etc.
NC_002645	01-03-0014	N (Human coronavirus 229E)	Purified protein	E.coli	100 μg	\$299	WB standard, Ab ELISA, immunogen, etc.
NC_002645	01-03-0015	M (Human coronavirus 229E)	Purified protein	E.coli	100 μg	\$299	WB standard, Ab ELISA, immunogen, etc.
NC_009019	01-03-0016	S1[[Bat coronavirus HKU4-2]]	Purified protein	HEK293	100 μg	\$299	WB standard, Ab ELISA, immunogen, etc.
NC_009019	01-03-0017	NP[[Bat coronavirus HKU4-2]]	Purified protein	E.coli	100 μg	\$299	WB standard, Ab ELISA, immunogen, etc.
KC881007	01-03-0018	S (1-1190) (Bat SARS-like coronavirus/WIV1)	Purified protein	HEK293	100 μg	\$299	WB standard, Ab ELISA, immunogen, etc.
	01-03-0019	S (RBD) (Bat SARS-like coronavirus/WIV1)	Purified protein	HEK293	100 μg	\$299	WB standard, Ab ELISA, immunogen, etc.
DQ022305	01-03-0020	S (1-1190) (Bat SARS-like coronavirus/HKU3-1)	Purified protein	HEK293	100 μg	\$299	WB standard, Ab ELISA, immunogen, etc.
	01-03-0021	S (RBD)(Bat SARS-like coronavirus/HKU3-1)	Purified protein	HEK293	100 μg	\$299	WB standard, Ab ELISA, immunogen, etc.
	01-03-0022	N (Bat SARS-like coronavirus/HKU3-1)	Purified protein	HEK293	100 μg	\$299	WB standard, Ab ELISA, immunogen, etc.
JX869059	01-03-0023	S(ΔTM)(MERS-CoV/EMC/2012)	Purified protein	HEK293	100 μg	\$299	WB standard, Ab ELISA, immunogen, etc.
	01-03-0024	NP (MERS-CoV/EMC/2012)	Purified protein	HEK293	100 μg	\$299	WB standard, Ab ELISA, immunogen, etc.
MN908947	01-03-0025	S(ΔTM)(2019-nCoV(isolate Wuhan-Hu-1)	Purified protein	HEK293	100 μg	\$299	WB standard, Ab ELISA, immunogen, etc.
	01-03-0026	NP (2019-nCoV(isolate Wuhan-Hu-1))	Purified protein	HEK293	100 μg	\$299	WB standard, Ab ELISA, immunogen, etc.
	01-03-0101	Anti-S (SARS-CoV)	IgG	Rabbit	100 μg	\$199	Neut., WB, ELISA, IP, IF
	01-03-0102	Anti- E (SARS-CoV)	Rabbit IgG	Rabbit	100 μg	\$199	WB, ELISA, IP, IF
	01-03-0103	Anti-NP(SARS-CoV)	Rabbit IgG	Rabbit	100 μg	\$199	WB, ELISA, IP, IF
	01-03-0104	Anti-S1(MERS-CoV/EMC 2C/2012)	IgG1	Mouse	100 μg	\$249	ELISA, IP, IF
	01-03-0105	Anti-S1(MERS-CoV/EMC 2C/2012)	IgG1	Mouse	100 μg	\$249	ELISA, IP, IF
	01-03-0106	Anti-S1(MERS-CoV/EMC 2C/2012)	IgG1	Mouse	100 μg	\$249	ELISA, IP, IF
	01-03-0107	Anti-S1(MERS-CoV/EMC 2C/2012)	IgG1	Mouse	100 μg	\$249	ELISA, IP, IF
	01-03-0108	Anti-S1(MERS-CoV/EMC 2C/2012)	IgG1	Mouse	100 μg	\$249	ELISA, IP, IF
	01-03-0109	Anti-S1(MERS-CoV/EMC 2C/2012)	IgG1	Mouse	100 μg	\$249	WB, ELISA, IP, IF
	01-03-0110	Anti-S1(MERS-CoV/EMC 2C/2012)	IgG1	Mouse	100 μg	\$249	ELISA, IP, IF
	01-03-0111	Anti-S1(Bat coronavirus HKU4-2)	IgG2b	Mouse	100 μg	\$249	ELISA, IP, IF
	01-03-0112	Anti-S1(Bat coronavirus HKU4-2)	IgG2a	Mouse	100 μg	\$249	ELISA, IP, IF
	01-03-0113	Anti-S1(Bat coronavirus HKU4-2)	IgG1	Mouse	100 μg	\$249	ELISA, IP, IF
	01-03-0114	Anti-S1(Bat coronavirus HKU4-2)	IgG1	Mouse	100 μg	\$249	ELISA, IP, IF
	01-03-0115	Anti-S1(Bat coronavirus HKU4-2)	IgG2a	Mouse	100 μg	\$249	ELISA, IP, IF
	01-03-0116	Anti-S1(Bat coronavirus HKU4-2)	IgG2a	Mouse	100 μg	\$249	ELISA, IP, IF
	01-03-0117	Anti-S1(Bat coronavirus HKU4-2)	IgG2a	Mouse	100 μg	\$249	ELISA, IP, IF
	01-03-0118	Anti-NP(Bat coronavirus HKU4-2)	IgG1	Mouse	100 μg	\$249	WB, ELISA, IP, IF
	01-03-0119	Anti-NP(2019-nCoV(isolate Wuhan-Hu-1)	Rabbit IgG	Rabbit	100 μg	\$199	WB, ELISA, IP, IF
	01-03-0120	Anti-NP(2019-nCoV(isolate Wuhan-Hu-1)	Rabbit IgG	Rabbit	100 μg	\$199	WB, ELISA, IP, IF

Phylogenetic tree of bat SL-CoVs and SARS-CoVs based on complete RdRp sequences (2796 nt):



Homology human and bat viruses

N protein	Bat SARS-like CoV/HKU3-1	Bat SARS-like CoV/WIV1	Bat SARS-like CoV/HKU4-1	2019-nCoV(isolate Wuhan-Hu-1)
SARS-CoV(BJ01/02)	96.70%			
SARS-CoV(BJ01/02)		99.80%		
SARS-CoV(BJ01/02)			44%	
SARS-CoV(BJ01/02)				90.30%
Bat SARS-like CoV/HKU3-1		96.40%		
Bat SARS-like CoV/HKU3-1			44.40%	
Bat SARS-like CoV/HKU3-1				89.50%
S(RBD) protein	Bat SARS-like CoV/HKU3-1	Bat SARS-like CoV/WIV1	Bat SARS-like CoV/HKU4-1	2019-nCoV(isolate Wuhan-Hu-1)
SARS-CoV(BJ01/02)	56.90%			
SARS-CoV(BJ01/02)		83.30%		
SARS-CoV(BJ01/02)			21%	
SARS-CoV(BJ01/02)				20.40%
Bat SARS-like CoV/HKU3-1		96.40%		
Bat SARS-like CoV/HKU3-1			44.40%	
Bat SARS-like CoV/HKU3-1				20%

References

1. Ksiazek TG, et al. A novel coronavirus associated with severe acute respiratory syndrome. *N Engl J Med.* 2003; 348:1953–1966. [PubMed: 12690092]
2. Zaki AM, van Boheemen S, Bestebroer TM, Osterhaus AD, Fouchier RA. Isolation of a novel coronavirus from a man with pneumonia in Saudi Arabia. *N Engl J Med.* 2012; 367:1814–1820. [PubMed: 23075143]
3. Lau SKP, et al. Severe acute respiratory syndrome coronavirus-like virus in Chinese horseshoe bats. *Proc Natl Acad Sci U S A.* 2005; 102:14040–14045. [PubMed: 16169905]
4. Drexler JF, et al. Genomic characterization of severe acute respiratory syndrome-related coronavirus in European bats and classification of coronaviruses based on partial RNA-dependent RNA polymerase gene sequences. *J Virol.* 2010; 84:11336–11349. [PubMed: 20686038]
5. Ge XY, et al. Isolation and characterization of a bat SARS-like coronavirus that uses the ACE2 receptor. *Nature* 2013 November 28; 503(7477): 535–538. doi:10.1038/nature12711